

FREEHOLD



House - Semi-Detached (EPC Rating: D)

HEATHWAY, DAGENHAM, RM10 9PP

Guide Price

£450,000

STEPS

Estate Agents



3 Bedroom House - Semi-Detached located in Dagenham

WOW... Large EXTENDED three bedroom house within easy walk to Heathway. The house has been fully modernized and is in beautiful condition throughout. The house benefits from lots OFF ROAD PARKING and HUGE south east backing garden with side access. Guide Price £450,000-£475,000

ENTRANCE PORCH

HALLWAY

LOUNGE

18 x 11'6

Window to front, open to...

EXTENDED KITCHEN DINER

21 x 10

L shape, with patio doors to garden, fabulous kitchen area, with modern units, window to rear.

UTILITY ROOM

7'10 x 5

Window to side, Vaillant combi boiler, washing machine plumbing.

BATH/SHOWER ROOM

Window to side, four piece modern suite, storage space.

LANDING

Via 'dogleg' staircase, two windows, loft access.

BEDROOM ONE

13'6 x 11'6

Window to rear.

BEDROOM TWO

11' 7x 9

Window to front.

BEDROOM THREE

12 x 7

Window to front.

EXTERIOR

Very large paved front driveway, off road parking for numerous cars with DROPPED KERB. Side access to

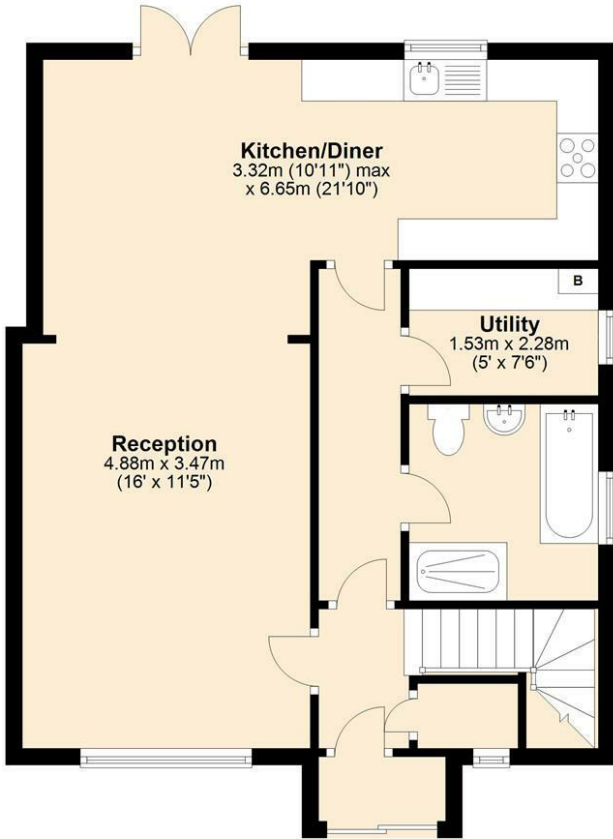
HUGE back garden, south east facing, Patio area, large lawn area, two large sheds. Sideway with further store area, door to front.

We routinely refer potential purchasers to Move with Us Ltd. It is your decision whether you choose to deal with Move with Us Ltd. In making that decision, you should know that we receive an annual payment benefits from Move with Us Ltd, equating to approximately £314.48 per referral.



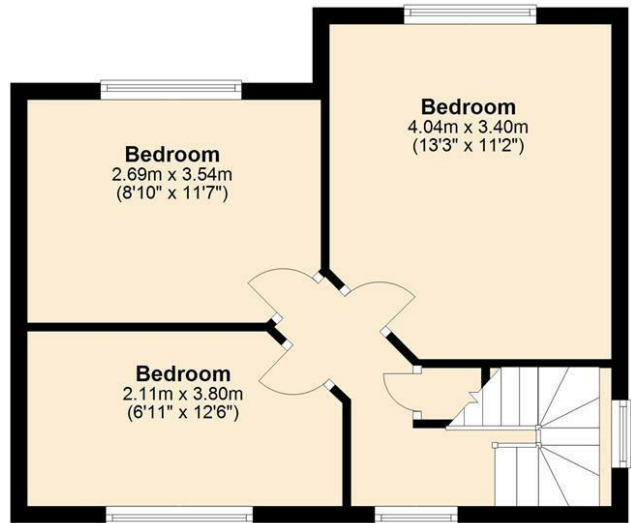
Ground Floor

Approx. 58.0 sq. metres (624.6 sq. feet)



First Floor

Approx. 37.6 sq. metres (404.6 sq. feet)

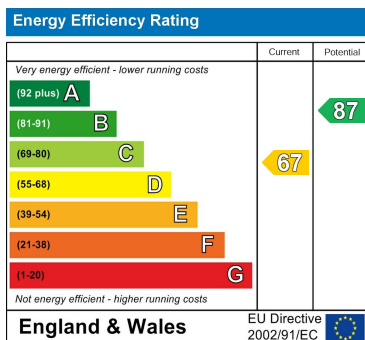


Total area: approx. 95.6 sq. metres (1029.2 sq. feet)

Council Tax Band

C

Energy Performance Graph



Call us on

020 8593 5933

dagenham@steps.me.uk

www.steps.me.uk

Agents Note: Whilst every care has been taken to prepare these particulars, they are for guidance purposes only. All measurements are approximate and are for general guidance purposes only and whilst every care has been taken to ensure their accuracy, they should not be relied upon and potential buyers are advised to recheck the measurements.

